

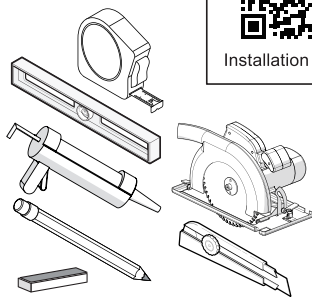
INSTALLATION GUIDE

PLEASE READ ALL STEPS BEFORE STARTING INSTALLATION!

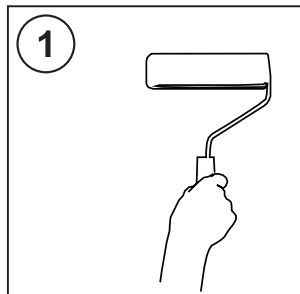
TOOLS REQUIRED:

- Level
- Measuring tape
- Pencil
- Utility knife or circular saw (60 teeth or more)
- Shims
- Silicone gun
- 100% silicone adhesive
- 100% silicone sealant (if installed in a shower)

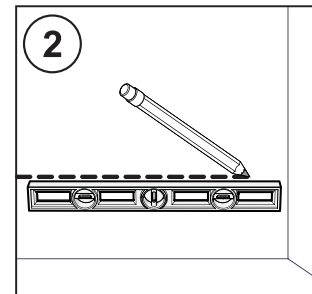
*Optional edge trims available



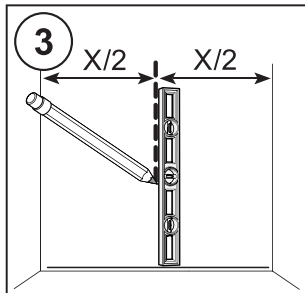
Installation video



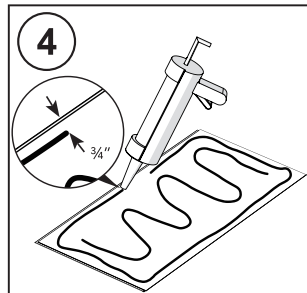
Make sure the surface is clean and without grease. We recommend to apply primer or a waterproof finish.



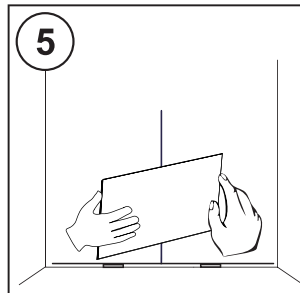
Find the highest point of the base. Use a laser if you have one. Place a 1/8" shim and a tile at this place. Mark the height of the tile. Trace an horizontal line with the level at this height.



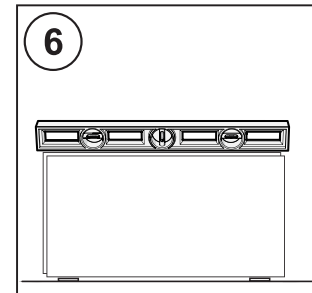
To have a symmetrical layout, measure the back wall and trace a leveled line on the middle of it. Align the tiles to it.



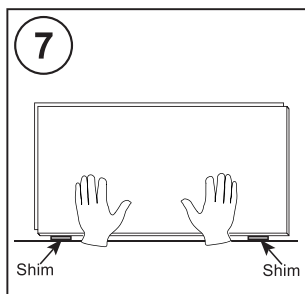
Apply a silicone adhesive line over the tile. Leave at least 3/4" gap to the edges.



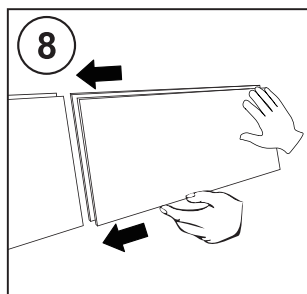
Install from the floor, starting from the center (first tile centered). The first row over 1/8" shims.



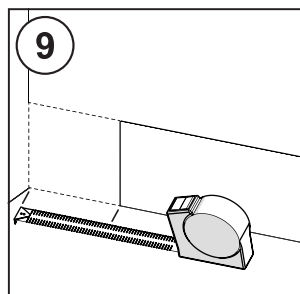
Use a spirit level to verify that the panel is correctly aligned.



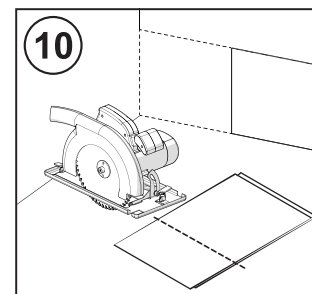
Press firmly on the tile to make sure it adheres to the wall surface.



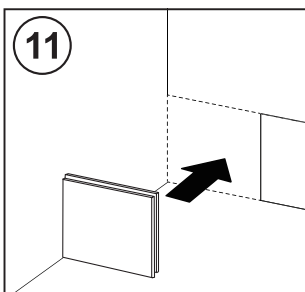
Place the following tile by connecting with the first one.



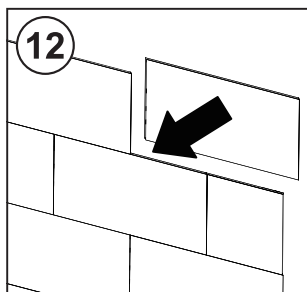
Measure the excess of tile to cut on the extremities.



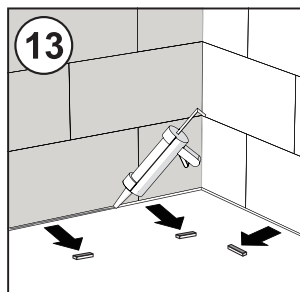
Cut the excess of the tile with a utility knife or a circular saw with a 60 teeth blade or more.



Glue the cut tile.

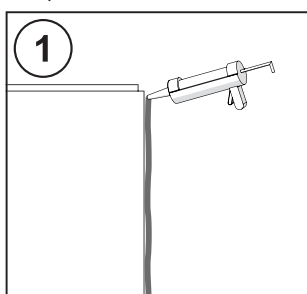


Repeat with the next rows of tiles.

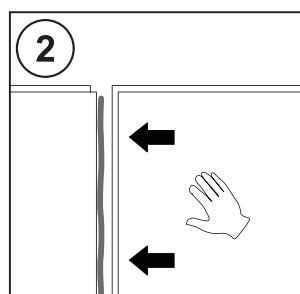


Once all the tiles have been installed wait 4 hours. Remove shims and apply a bead of silicone to fill the gap between the tiles, the floor and in the corners.

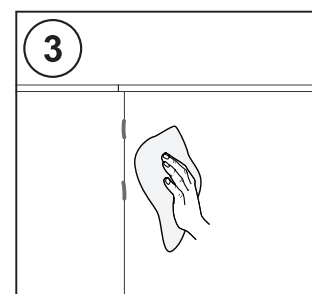
REQUIRED FOR TILES IN A SHOWER



Apply sealant in the joints to avoid water from infiltrating through the tiles.



Join the tiles.



Remove the extra sealant. Wait 24 hours before using the shower.